



GROWER GROUP ALLIANCE

**F**  **FORUM 23**

WHERE TODAY'S AG LEADERS CONNECT WITH TOMORROW'S



# Conference Program

FRIDAY, 28 JULY, 2023

**#GGAForum23**



# Table of Contents

03	Welcome Message
05	Program Snapshot
07	GGA Overview
09	CEO Address
11	Segment A - The Challenges
19	Segment B - What Lies Ahead?
27	Open Innovation
31	Segment C - Work Underway
32	South-West WA Drought Hub Study Tour
33	South-West WA Drought Hub Feature
39	Segment D - What's New?
53	Interactive Close

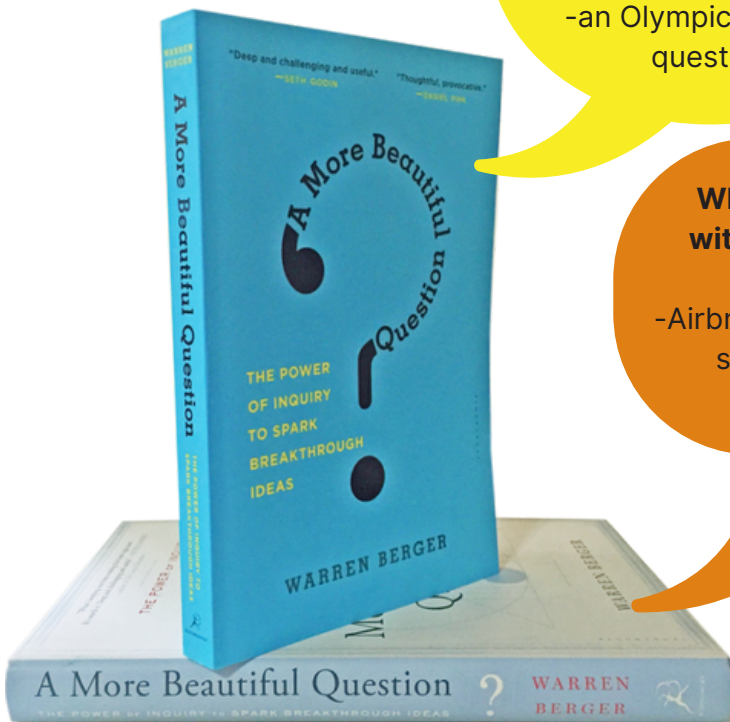
# Consider your beautiful question

**Why do we want kids to “sit still” in class?**  
-new research says that’s just not a good way to learn.

Some examples of beautiful questions

**What if countries competed on playing fields instead of battlefields?**  
-an Olympics-worthy question

**Why should you be stuck without a bed if I’ve got an extra air mattress?**  
-Airbnb’s \$10 billion valuation all started with a Beautiful Question.



**beau•ti•ful ques•tion** *n*: an ambitious yet actionable question that can begin to shift the way we perceive or think about something—and that might serve as a catalyst to bring about change.

(Berger, 2016)



Video on logic of 'Beautiful Questions'



# Welcome

## From GGA's CEO - Rikki Foss

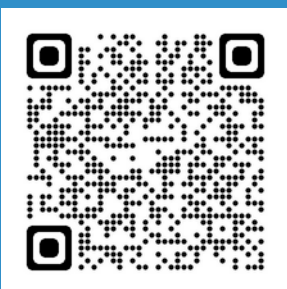
Welcome to GGA Forum23, the 19th Forum GGA has delivered to stakeholders. This year, we're determined to build relationships, one conversation at a time, unlocking the collective intelligence of our ag community to co-design a future for agriculture we can all be hopeful about.

Throughout the event, I encourage you to initiate conversations and make connections that could incrementally shape the future. Forum23 is, after all, where today's ag leaders connect with tomorrow's.

There is no doubt the leadership models around us are evolving. It is important for today's and tomorrow's leaders to recognise the importance of these shifts toward leadership that encourages connection, collaboration, creativity and courage.

I feel these attributes epitomise the GGA brand. As an organisation we foster connections with industry and our approach is a collaborative one. Due to our relatively small size we often have to get creative, and we are taking courageous steps toward a producer-led system of agricultural innovation, adoption and extension.

Thank you for joining us for Forum23. We hope to inspire you to continue to connect and have transformational conversations beyond this room.



Forum23 feedback  
& suggestions

# #GGAForum23

# Welcomes

## Cocktail Party Emcee



**Peter Roberts**

GGA Chair

✉ chair@gga.org.au

Formerly a farmer from Dunn Rock, Peter is a graduate of Harvard Agribusiness Seminars and the Australian Institute of Company Directors. Peter was appointed as a GGA Independent Director in September 2018 and to GGA Chair in September 2020. Peter has extensive leadership experience as past Chair of the GRDC Western Panel from 2011-2018, past non-executive Director of Barley Australia, past Western Malting Barley Advisory Committee member and past Chair of South East Premium Wheat Growers Association (SEPWA).

## GGA network breakfast Emcee



**Erin Gorter**

GGA Vice Chair,  
Independent Director

✉ eringorter@outlook.com

Erin Gorter has extensive experience in working with grower groups and was a driving force in managing two WA groups – Evergreen Farming and Southern Dirt. She is a rural industry consultant; a non-executive director of Australian Grain Technologies; and manages all facets of the Ag4U Career Pipeline Program, currently being run through Murdoch University. Erin is a graduate of the Australian Institute for Company Directors program, Australian Rural Leadership Program and the Curtin Business School Ignition program. Most recently, Erin was appointed to the Council of Australian Arab Relations (CAAR), the Council of Agricultural Economic Development and the Rural and Regional Advancement Foundation committee, as part of the Mt Burdett Foundation.

## Conference | Welcome to Country



**Oral McGuire**

Noongar Leader

✉ oral@gundiconsulting.com.au

Oral McGuire is a prominent leader and landholder within the Noongar community who is strongly skilled at cross cultural mentoring and education. Oral has extensive experience in traditional land and fire management practices, as well as 20 years' experience running his consulting business. He has worked across government, private enterprise and the not-for-profit sector, bridging the divide between Aboriginal and non-Aboriginal communities.

Oral has held a number of current and past roles in Aboriginal organisations. including with Noongar Land Enterprises Incorporated, Yaraguia Enterprises Incorporated and as a member of the Curtin University Aboriginal Advisory Council.

# Program - Friday 28 July



## 8:45am | Segment A - The challenges

Session 1 – The seven principles of resilience thinking | Speaker – Dr. Hanabeth Luke

Session 2 – Mindset makeover for change and impact | Speaker – Zoë Arden

Session 3 - Accessing collective intelligence panel discussion | Panelists – Tanya Kilminster, Dr. Ben Biddulph, Kallista Bolton, Dr. Hanabeth Luke, Zoë Arden

### Break (Morning Tea)

## 11:25am | Segment B - What lies ahead?

Session 4 – Journey to sustainability & panel | Speakers – Dr. Jo Wisdom, Jane Wardle, Simon Wallwork, Dr. Nathan Craig, and David Ward

Session 5 – Natural capital accounting decoded | Speakers – Richard Brake

### Luncheon | 1.00 pm – 2.00 pm

## 2:00pm | Segment C - Work underway

Session 8 (*\*rescheduled*) – Ministers Address | Speaker – The Honourable Jackie Jarvis MLC Minister for Agriculture and Food; Forestry; Small Business

Session 6 – South-West WA Drought Resilience Adoption and Innovation Hub showcase | Speakers – Mark Holland, Phil Honey, Chris O'Callaghan, Associate Prof. Nik Callow and Neil Lantzke

### Break (Afternoon Tea)

## 3:45pm | Segment D - What's new?

Session 7 – First Nations matters | Speaker – Cesar Rodriguez

Session 9 – Introducing the WA Agricultural Research Collaboration

Session 10 – Event close with a twist | Facilitators – Erin O'Brien and Melanie Dixon

### Closing Sundowner | 4.45 pm – 6.00 pm

# #GGAForum23

# New contacts

# Grower Group Alliance

GGA is in a unique and potentially catalytic position to drive innovation investment from the ground up, be at the forefront of innovation and adoption and shape the future for the benefit of all producers.

## Our Beliefs

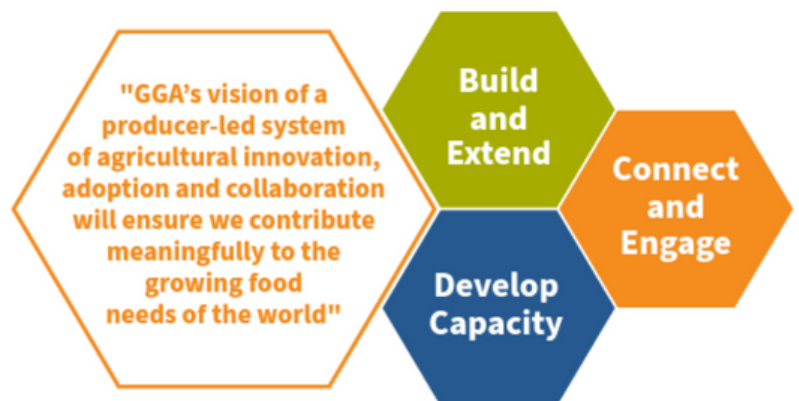
- We believe in sustainable production and that's why building and extending innovative research, development and extension in Western Australia is vital for growers' prosperity.
- We believe that developing the capacity of a diverse and connected network of grower groups enables producers, families and communities to thrive.
- We believe in the power of collaboration and ecosystems where building deep relationships and mutually rewarding partnerships with industry makes an enormous difference

## Our Purpose

To grow together to make Western Australia stronger

## Our Vision

A producer-led system of agricultural innovation, adoption and collaboration

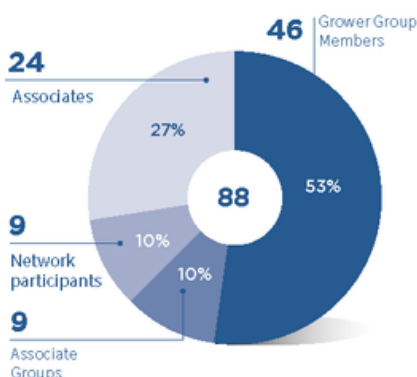
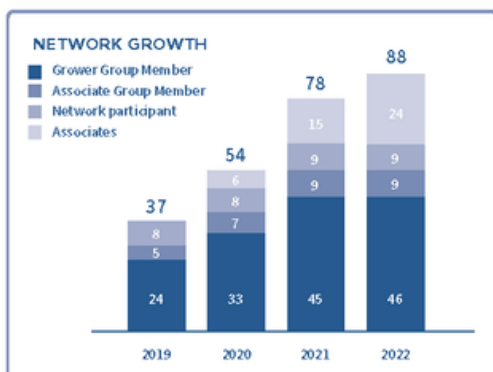




# GGA Impact

**As at August 2022**  
Source: GGA Annual Report 2022

## GGA NETWORK

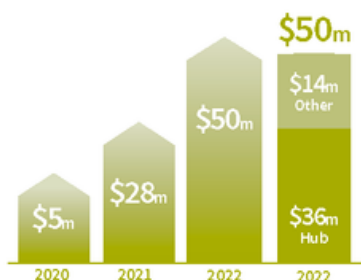


GGA network organisations

## GGA PROJECTS

Values are over life of project - cash and in-kind

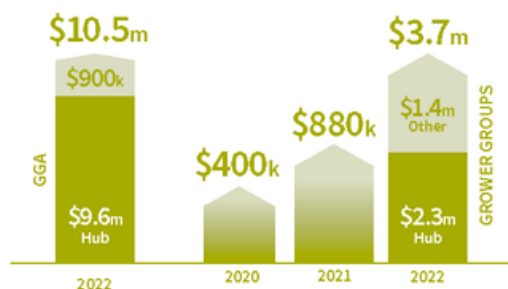
### VALUE OF PROJECTS GGA COLLABORATING IN



### PROJECT MANAGEMENT SPLIT

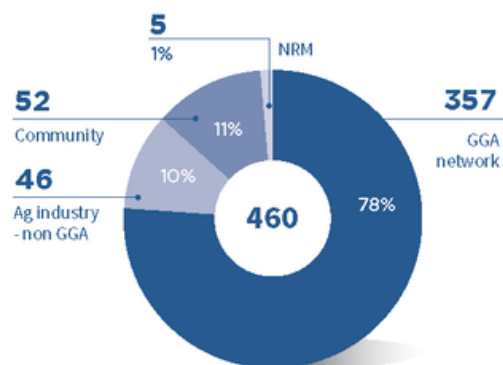


### PROJECT MANAGEMENT FEES



## GGA CAPACITY BUILDING

2022 calendar year program



## SW WA DROUGHT RESILIENCE ADOPTION AND INNOVATION HUB

\$10m

FDF-aligned cash funding for Hub operations 2021-24

52

Hub Consortium Partners

46

Regional Advisory Committee members

\$19m

Value of WA projects that are FDF-affiliated and supported by the Hub 2021-24

22

Number of WA projects that are FDF affiliated and supported by the Hub in 2021-24

## COMMUNICATION ENGAGEMENT

5000

Website single users per quarter

34000

Website pageviews per quarter

25 Newsletters per year

1281 Subscribers

40% average reader open rates

3786 Followers

30,000 Tweet impressions per month

1023 Followers

45 Industry events attended

306 Staff hours invested to attend 21/22 FY

# CEO Address

## Opening Address



**Rikki Foss**

GGA CEO

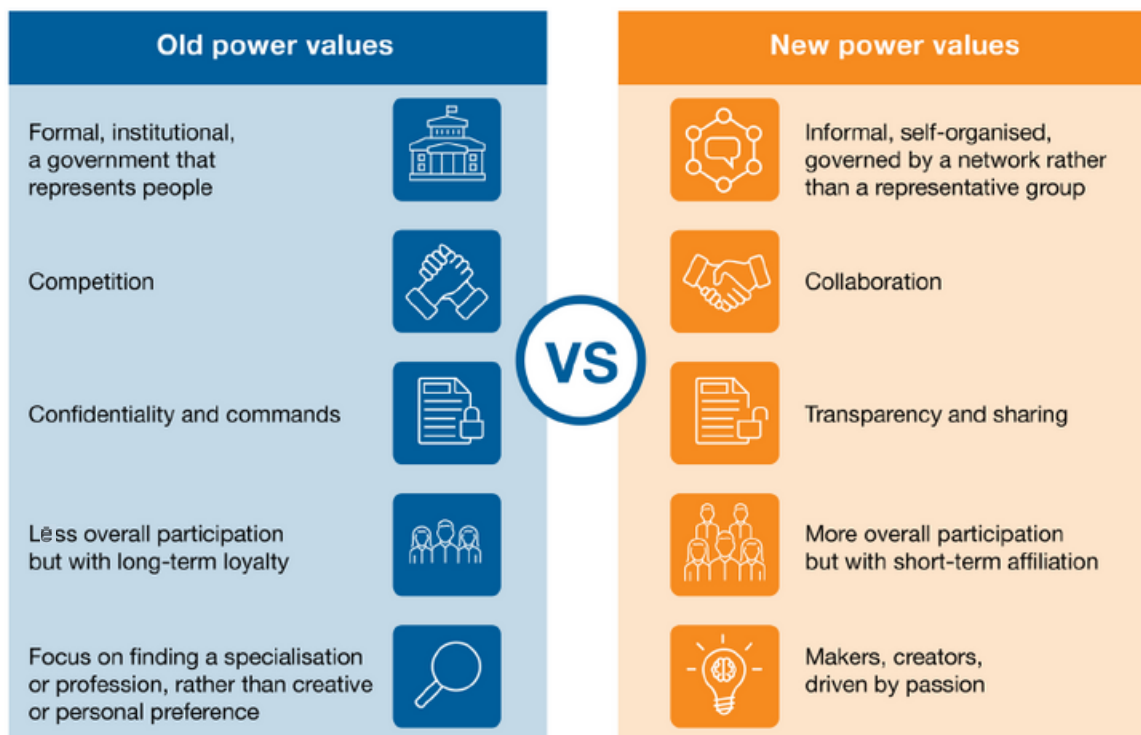
✉ rikki.foss@gga.org.au

Rikki Foss joined GGA in November 2021, bringing extensive commercial industry knowledge, strategic capability, team leadership and governance experience to the organisation.

Before her leadership appointment with GGA, Rikki had nine years with WA-based grain accumulation and export business Plum Grove, serving for six years in the role of Senior Marketing Executive before transitioning into the role of General Manager for more than three years.

Rikki's breadth of commercial acumen in agriculture is consolidated with three years in the agribusiness sector at ANZ as a Regional Coordinator and six years with CBH as a Regional Manager.

Rikki has a rural background, and for several years has provided a grain consultancy role for her family's broadacre grain and livestock operation in WA's central grainbelt. Rikki's career and professional networks in agriculture originate from her time completing a Bachelor in Agriculture Business and Marketing from the Muresk Institute of Agriculture.



Heimans, J. and Timms, H. (2018) *New Power: How Power Works in our our hyper-connected world- and how to make it work for you.* New York: Doubleday.

## Session Notes

# Segment A - The Challenges

## Session 1 | Seven Principles of Resilience Thinking



Dr Hanabeth Luke

Senior Lecturer -  
Southern Cross University

✉ hanabeth.luke@scu.edu.au

Dr Hanabeth Luke is a passionate educator who has been teaching and conducting research in Southern Cross University's Faculty of Science and Engineering since 2011.

She is deeply motivated by helping regional communities and farmers to become more resilient in times of transition, bringing communities to science, and vice versa.

Her research focuses where society, land, industry and community intersect, presently working with the Soil CRC to identify drivers of on-farm decision making across Australian farming systems, including barriers to adoption of new innovations and changing approaches to land management.

As the leader of two national Soil CRC research projects, her work aims to improve the knowledge-sharing process in agriculture and land management, gaining a sound and nuanced understanding of the drivers of decision making on farms.

These understandings underpin her role as Coordinator for the new Southern Cross University courses in Regenerative Agriculture in which she specialises in the delivery of the core unit 'Building Resilience in a Changing Climate: Through Drought, Fire and Flood'.



Study programs involving courses coordinated by Dr Hanabeth Luke



**Applying resilience thinking**  
Seven principles for building resilience in social-ecological systems

Stockholm Resilience Centre  
Stockholm University  
www.stockholmresilience.org



Watch the 3-minute video here

## Session Notes

# Planetary Boundaries

**The planetary boundaries concept presents a set of nine planetary boundaries within which humanity can continue to develop and thrive for generations to come.**

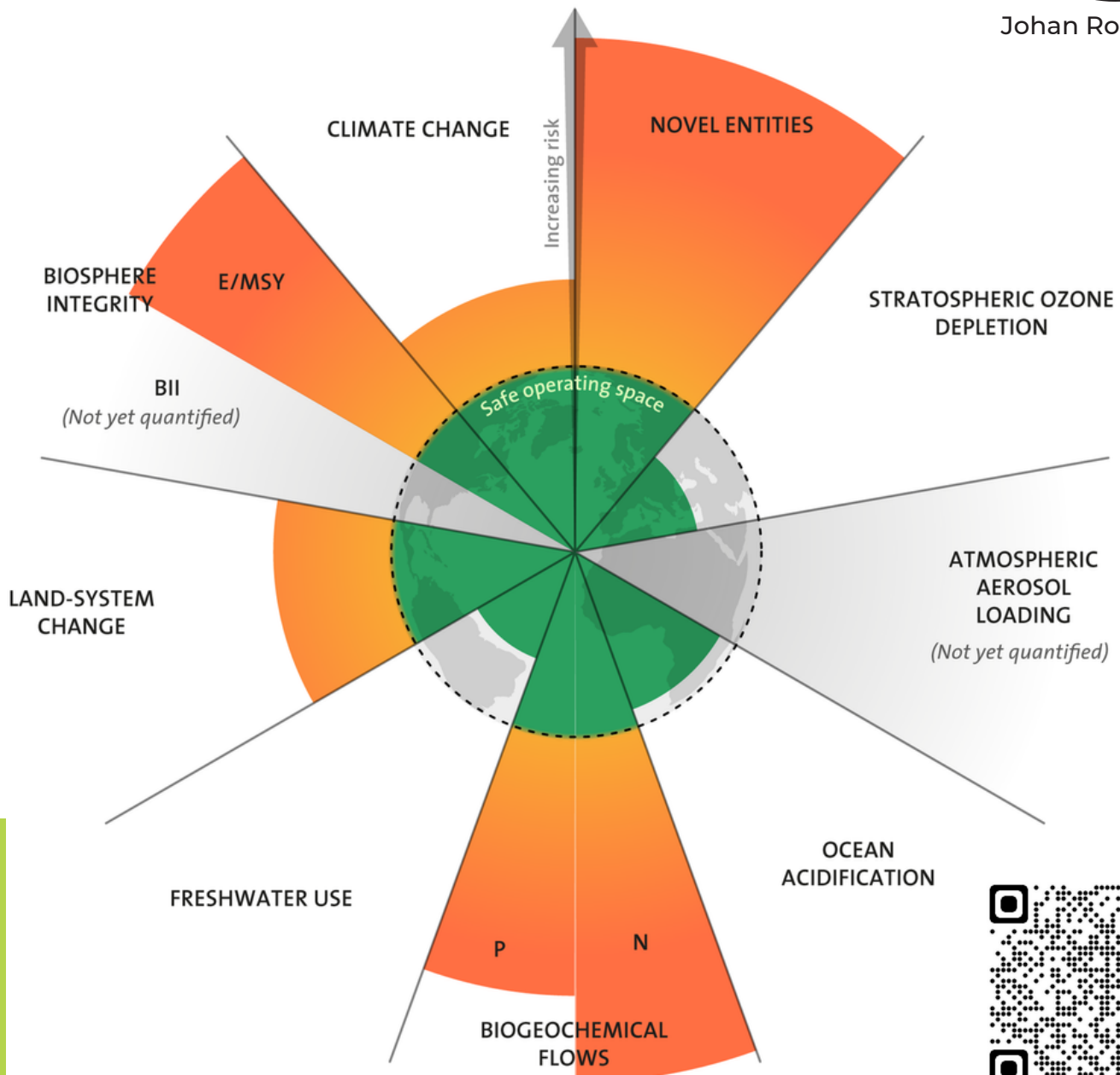
In 2009, Johan Rockström led a group of 28 internationally renowned scientists to identify the nine processes that regulate the stability and resilience of the Earth system.

The scientists proposed quantitative planetary boundaries within which humanity can continue to develop and thrive for generations to come. Crossing these boundaries increases the risk of generating large-scale abrupt or irreversible environmental changes.

Since then the framework has generated enormous interest within science, policy, and practice including the development by the UN of the 2012 global Sustainable Development Goals, later adopted widely in 2020 by a forum of 200 companies including some of the world's best known brands.



Johan Rockström



Credit: Azote for Stockholm Resilience Centre, based on analysis in Wang-Erlandsson et al 2022

Stockholm Resilience Centre

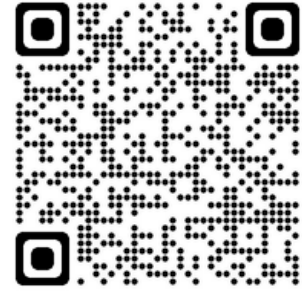


# Planetary Boundaries Resources



Let the environment guide our development  
1,863,602 views | Johan Rockström • TEDGlobal 2010

How it started 2010



5 transformational policies for a prosperous and sustainable world  
1,838,560 views | Johan Rockström • We the Future

How it's going 2018



10 years to transform the future of humanity -- or destabilize the planet  
2,125,351 views | Johan Rockström • Countdown

Call to action 2020



Documentary 2021



## Session 2 – Mindset makeover for change & impact



**Zoë Arden**

Fellow of the Cambridge  
Institute for Sustainability  
Leadership

✉ ardenzoe@yahoo.com

<http://www.zoearden.com>

Zoë Arden is an independent leadership communications specialist and Fellow and Associate Director at the Cambridge Institute for Sustainability Leadership (CISL) serving as faculty and tutor on many key engagements.

Amongst her roles with CISL, Zoë is the convenor of three online courses for existing and aspiring leaders - Leading Sustainability: High Impact Leadership, Communicating for Influence and Impact and a new course, Women Leading Change: Shaping our Future.

In her work as an independent leadership communications specialist, Zoë crafts compelling purpose-centered learning programs for multiple business and supports existing leaders and high-potential individuals with leadership training and executive presence, including clients such as Accenture, Adidas, BBC, Farfetch and Google.

Zoë has worked with a string of global brands on their sustainability and communications strategies including AstraZeneca, Barclays, Nestlé, Novartis, BT-Retail and Apple in the US and Europe.

## Courses led by Zoë Arden



### Leading Sustainability: High Impact Leadership

For professionals seeking to build skills in values driven, high impact leadership.



### Communicating for Influence and Impact

For professionals seeking to build the communication skills to achieve meaningful change.



### Women Leading Change: Shaping Our Future

For current and aspiring leaders who are ready to lead change in organisations and society through systemic transformation.



**UNIVERSITY OF  
CAMBRIDGE**

INSTITUTE FOR  
SUSTAINABILITY LEADERSHIP



Cambridge Institute  
for Sustainability



## Session Notes

### Session 3 - Panel | Accessing collective intelligence



**Tanya Kilminster**

GGA Hub Knowledge Broker

✉ tkilminster@gga.org.au

Based in Merredin with DPIRD since early 2000, Tanya joined GGA in April 2020. Tanya has a Bachelor of Science and Honours in Microbiology and, after a brief stint at CSIRO in ruminant research, headed back to the wheatbelt. Tanya brings 20 years' experience in systems R&D, focused on sheep production, management and the role of sheep in the farming system. Tanya also farms with her husband Dean at Bruce Rock as a grain producer, with wool and meat being significant contributors on poorer performing soil types.

Prior to joining the GGA team, Tanya worked closely with the Merredin and Districts Farm Improvement Group (MADFIG), serving as a Board member for three years and collaborating with the Far Eastern Agriculture Research (FEAR) Group, developing new projects to improve long term profitability and sustainability of farming businesses in low rainfall areas.

### Session 3 - Panel | Accessing collective intelligence



**Dr. Ben Biddulph**

DPIRD Chief Scientist

✉ ben.biddulph@dpird.wa.gov.au

Dr. Ben Biddulph was appointed as the inaugural Chief Primary Industries Scientist at the Department of Primary Industries and Regional Development (DPIRD) in 2021.

Ben is a key member of the Primary Industries Development senior leadership team driving to develop and implement strategies designed to build and enhance the Department's scientific research consistent with industry requirements. Ben supports the continuous improvement of primary industries science, research and development capability in Western Australia.

Prior to this appointment, Ben spent over twenty years leading, managing and delivering research throughout regional WA and nationally on issues affecting primary producer's production and profitability.

### Session 3 - Panel | Accessing collective intelligence



**Kallista Bolton**

GGA Stakeholder &  
Communications  
Manager

✉ kbolton@gga.org.au

Joining GGA in March 2020, Kallista brings experience in stakeholder management, marketing and commercial enterprise. Kallista has a Bachelor of Business, marketing major from the University of Technology Sydney, a Graduate Certificate in Regenerative Agriculture from Southern Cross University (2022) and has completed studies with Cambridge University Institute for Sustainability Leadership in Communicating for Influence and Impact (2021), and High Impact Leadership (2020).

Kallista moved into agriculture in 2016, working with Elders Narrogin for three years alongside running her own artisan olive oil enterprise from her Crossman property for 11 years.

Her marketing and stakeholder management foundation was built over ten years in the WA tourism industry in domestic and international marketing roles.

## Session Notes

# Segment B - What lies ahead?

## Emcee Segment B - What lies ahead



**Dr. Jo Wisdom**

GGA Innovation Manager

✉ [joanne.wisdom@gga.org.au](mailto:joanne.wisdom@gga.org.au)

Dr Jo Wisdom joined the GGA in August 2022 and brings twenty years of experience working and lecturing in agriculture throughout research, government and industry.

Jo has a Bachelor of Arts (Anthropology), a Bachelor of Science (Agriculture) and a PhD in Plant Physiology.

Jo is owner and Director of the Great Southern's first wine business Plantagenet Wines based in Mount Barker, one of KPMG's 'Best of the West'. Jo also holds an adjunct position at The University of Western Australia, works with local agtech startups, and is studying Digital Technologies at Flinders University under a STEM Cadetship Scholarship.

Jo is passionate about facilitating conversations across sectors in WA industry and commodities in agriculture. During the Forum she will present a first look at endeavours towards mapping the WA Ag Innovation Ecosystem and recent work on an Open Innovation Project regarding testing on-farm water quality.

## Session 4 – Panel | Journey to Sustainability



**Simon Wallwork**

AgZero2030 Chair

✉ [swallwork@westnet.com](mailto:swallwork@westnet.com)

Simon, his wife Cindy Stevens and their three children manage a broadacre crop and livestock operation of over 3700 hectares at Corrigin. Simon conducts some agronomy consultancy off-farm, is Chair of AgZero2030 and is a member of the Corrigin Farm Improvement Group.

Simon is a prior EO for the Noongar Land Enterprise group and from 2010 to 2014 was involved in the Climate Champion Program (GRDC funded) - a national program that brought over 30 growers together to share information and communicate the latest research during that period on climate change impacts and on-farm adaptation and mitigation strategies.

Simon is a current recipient of the CBH Group Growing Leaders Scholarship program, completing the one-year Signature Leaders development program through Leadership WA.

## Session Notes

## Session 4 – Panel | Journey to Sustainability



**Jane Wardle**

Quality and Sustainability  
Manager - Marketing and  
Trading at CBH Group

✉ jane.wardle@cbh.com.au

Jane grew up on the south coast of Western Australia and has come from a line of farming families. She has spent most of her career within the agri-food industry and believes there is no better industry to be a part of. She currently leads grain quality and sustainability in the marketing and trading division of Australia's largest grain exporter CBH Group.

Jane has previously held positions based in Perth, regional WA and Melbourne. Jane understands that leadership requires finding opportunities to develop and promote self-actualising skills, and the use of these skills will help her build a better culture for future generations.

## Session 4 – Panel | Journey to Sustainability



**Dr. Nathan Craig**

West Midlands Group EO

✉ eo@wmg.org.au

Nathan Craig's resume states that he would like to make a significant contribution to the future of agriculture in Australia. He is currently working towards this in his role as Executive Officer with the West Midlands Group, where his team is developing new methods of project extension. Nathan is also Chairman of Rural Edge Australia, which delivers training workshops to farm businesses. In all of this, Nathan aims to build a platform for innovation to be delivered efficiently and effectively to the agricultural community.

## Session 4 – Panel | Journey to Sustainability



**David Ward**

Farmanco Management  
Consultant Dowerin

✉ dward@farmanco.com.au

David Ward has been in agribusiness since 1995 and joined Farmanco in 2000. Working with agricultural businesses across the wheat belt and great southern, David's expertise is finance; given his extensive experience with NAB.

David is passionate about agriculture and is driven to assist growers in optimising business productivity, planning for the future and achieving their goals.

## Session Notes

## Session 5 - Natural Capital Accounting



**Richard Brake**

Richard Brake Consulting

 richard@richardbrakeconsulting.com.au

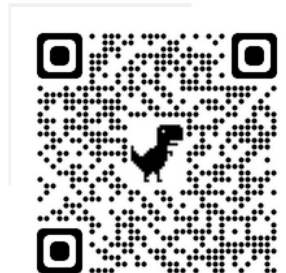
Richard Brake is the principal of Richard Brake Consulting.

Richard comes from a family that can trace their farming heritage back to the early 16th century. Richard has over 30 years' extensive international agribusiness experience, providing consulting services in business analysis and farming systems management to corporate and family-owned grain, livestock, and horticultural enterprises in the UK, New Zealand, and Australia. In addition to consulting, he has owned and operated an international cold chain flower export business, an ISO 9001 accredited agricultural testing laboratory and a machinery hire business.

Richard operates an agribusiness consulting service to broadacre, horticultural and pastoral businesses across Australia. He has a deep understanding of the profit drivers within an enterprise and loves challenging owners to deliver business improvement.

Richard Brake Consulting was the first in Western Australia to develop on-farm carbon emissions reporting and management as a standard key performance indicator within annual business analysis.

## SUSTAINABLE DEVELOPMENT GOALS

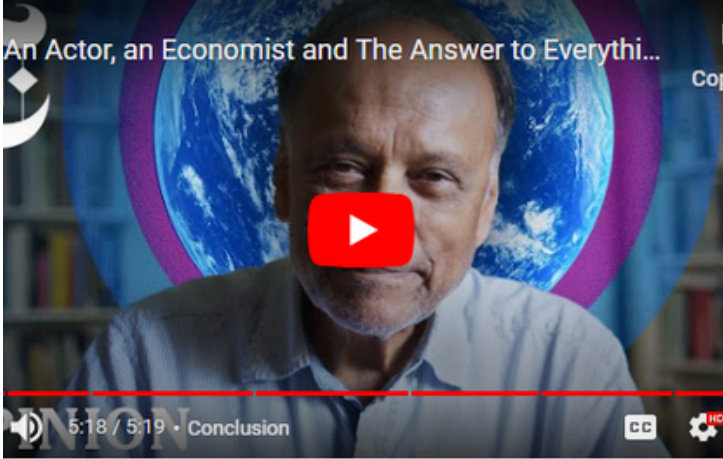


UN Sustainable Development Goals

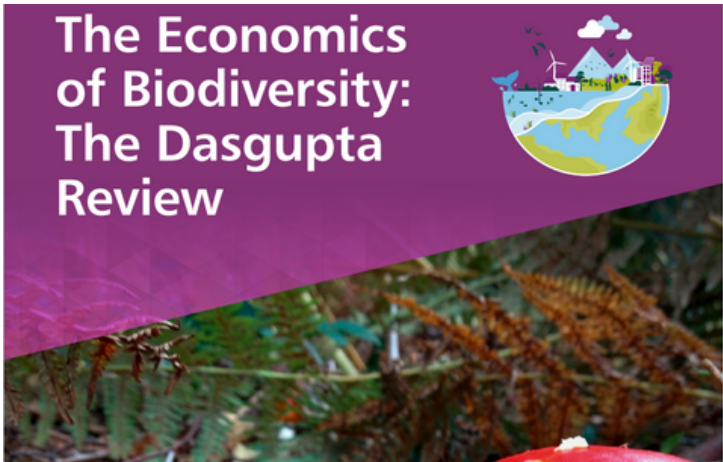


## Session Notes

# Richard Brake Content Resources



Dasgupta simplified



Dasgupta Review



Biodiversity Credits



Natural Capital Initiative



## Session Notes

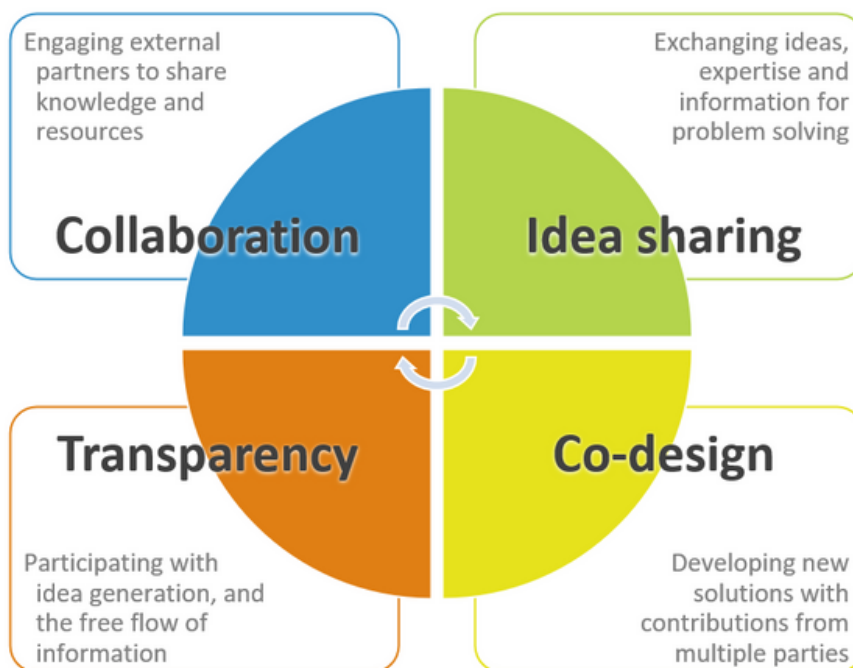
# Open Innovation

**Grower Group Alliance is exploring an Open Innovation project methodology to support the WA innovation ecosystem to pursue producer-led challenge solutions.**

**Open Innovation is a collaborative approach, involving stakeholders such as farmers, researchers, and technology providers, to jointly develop and share knowledge to address industry challenges.**



Dr Joanne Wisdom,  
GGA Innovation Manager



Open Innovation  
Project Webpage



GGA Agricultural  
Innovation  
Ecosystem Map

## Open innovation model for agriculture

Producers possess a deep understanding of the challenges and risks they encounter. However, finding effective solutions can be difficult. From paddock to plate our industry grapples with a range of complex problems. The ever-evolving nature of these challenges necessitates constant innovation.

However, as stated by AgriFutures, for Australian agriculture to reach its ambition of becoming a \$100 billion industry by 2030, it needs a paradigm shift.

An example of Open Innovation in action is the GGA's Water Quality Testing Technology project.

# Water Quality Testing and Herbicide Efficacy

Collaborating with grower groups, Beanstalk AgTech and The University of Western Australia, GGA has designed an Open Innovation project to consider on-farm monitoring of water quality in relation to herbicide efficacy and to explore options to help farmers make best practice choices regarding water use for spraying.

Poor water quality can severely impact herbicide efficacy leading to higher production costs, a reduction in options for managing weeds, and environmental degradation through over-use of chemicals and water waste.

Herbicide resistance

Herbicide cost

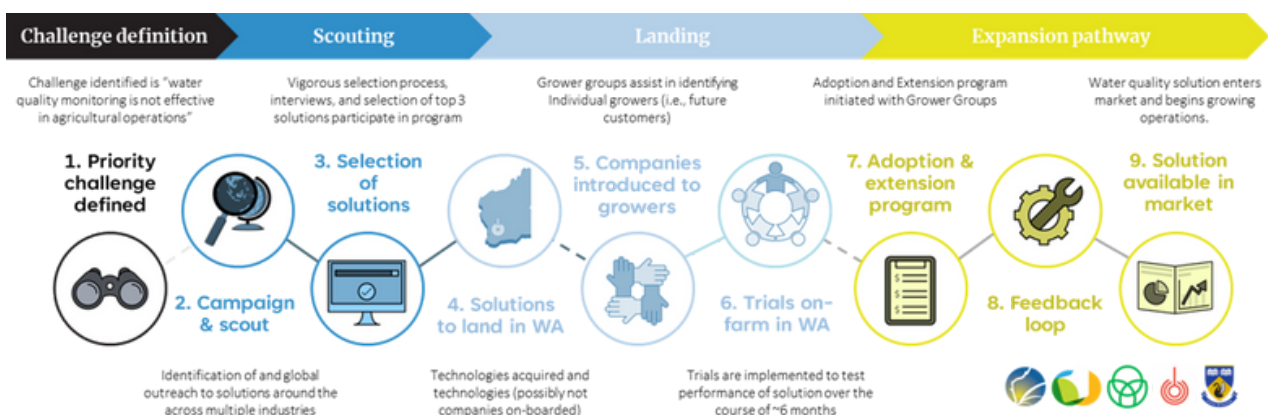
Wasted water

The causes of poor water quality include sedimentation, nutrient and chemical runoff, algal blooms, salinity and pollution.

The key water quality parameters that impact herbicide efficacy include pH, cations (water hardness), bicarbonates (hardness), turbidity, electrical conductivity and temperature.

Taking the key principles of Open Innovation this project demonstrates an alternative model to traditional siloed agricultural research. It takes a producer-led challenge as identified by the SW WA Hub priority-setting process and seeks to develop tailored solutions to WA farmers.

## Project Plan



# Session 8 - Ministers Message



## The Honourable Jackie Jarvis MLC

Minister for Agriculture and Food; Forestry; Small Business

The Honourable Jackie Jarvis MLC Minister for Agriculture and Food; Forestry; Small Business, has been Member for the South West Region in the Legislative Council since 2021.

Prior to entering politics, Minister Jarvis started her career in the finance industry before moving to Margaret River in 1998 and establishing a commercial vineyard and winery with her husband. They launched the Jarvis Estate wine brand in 2002.

Through her work as a farmer, regional businesswoman and in the public service, the Minister has a long career advocating for communities in the bush.

She has proved herself as a strong leader, through her work as CEO of the WA Rural, Regional and Remote Women's Network, during her time as Commissioner for the Forest Products Commission and on the boards of the South West Development Commission and Australian Landcare Council.

The Minister's work attracting resettled refugees to work in agriculture saw her named 2014 WA Rural Woman of the Year and national runner-up. She was also named the Rural Community Leader of the Year at the 2019 Australian Farmer of the Year awards.

Minister Jarvis was appointed to the McGowan cabinet as Minister for Agriculture and Food; Forestry; Small Business in December 2022 and is passionate about continuing to provide a strong voice for regional communities in WA.



## Session Notes

# Segment C - Work underway

## Emcee Segment C - Work Underway



**Julianne Hill**

Hub Adoption Manager

✉ [Julianne.Hill@gga.org.au](mailto:Julianne.Hill@gga.org.au)

Joining GGA in November 2022, Julianne Hill has a wealth of knowledge and experience as an agricultural facilitator and extension leader. From 1993, Julianne spent 19 years with the Department of Agriculture (now DPIRD) as a biosecurity officer and then farming systems officer while managing her own farming enterprise with her husband. She then worked for 11 years as a coordinator for the Grains Research and Development Corporation's Regional Cropping Solutions Network, now known as the GRDC National Grower Network. In recent years she took up a role in Bunbury with Western Dairy, while balancing the role of GRDC Grower Network coordinator.

Early in her career, Julianne also managed broadacre properties in the WA Wheatbelt, and worked on various properties throughout Australia. Julianne and her husband currently operate a small property in WA's South West running beef cattle and prime lambs.

## Session 6 - Hub 'Work to date'



**Mark Holland**

GGA Hub Director

✉ [mholland@gga.org.au](mailto:mholland@gga.org.au)

Mark joined GGA in January 2020 as a Program Broker being the first DPIRD staff assignee as part of the GGA-DPIRD collaboration agreement and in 2022 took on the role as Director of the Drought Resilience Adoption and Innovation Hub. With a Masters of Business Administration under his belt, Mark brings strong governance, program and project management skills, with a particular acumen around new program development and business administration.

Mark has worked with many grower groups through his various roles with DPIRD/DAFWA over a 35 year period including managing the Project Management Office and directing the Agribusiness Innovation Fund, which included the Grower Group Grants Program and setting the Grower Group Alliance on a sustainable footing.

Mark founded DAFWA's highly regarded AGWEST Plant Laboratories business unit and managed it for over 14 years. In this role he guided the delivery of the State's high-risk plant import quarantine, plant disease diagnostics and seed testing services, seed certification and seed potato health services.

Mark was also the inaugural Registrar of the Industrial Hemp Act 2004 and the Officer in Charge of the Seeds Act 1981, until 2010.



# South-West WA Drought Hub Study Tour

**September 17-22, 2023**

Join other WA growers from Sunday, September 17, to Friday, September 22, for a five-day tour looking at innovation in South Australian broadacre agriculture as part of an exchange experience for growers and researchers with the SA Hub.

The tour is suitable for growers interested in viewing new approaches to soil and water productivity and different ways of unlocking plant potential and examples of efficient input use.

Lodge an EOI to attend via the QR code below.

## Study Tour Highlights

- Hart Field Day (Sept 19)
- Visiting trials focused on nitrogen, time of sowing for canola, drought and salinity germplasm, frost, soil modification and mixed species pastures
- Visit the Plant Accelerator® at the University of Adelaide's Waite Campus
- Grower dinners.



Kellie-Jane Pritchard,  
Hub Project Manager



Lodge your  
Study Tour EOI here

# South West WA Drought Hub

**The South-West WA Drought Resilience Adoption and Innovation Hub (SW WA Hub) is delivering on its goal of harnessing collaboration to enhance drought resilient practices and accelerating innovation and adoption.**



Mark Holland,  
Hub Director

Funded by the Australian Government's Future Drought Fund, the SW WA Hub is led by the GGA which was announced as the lead of the Hub in 2021.

The SW WA Hub is playing a unique role in the agricultural ecosystem by bringing together public and private enterprise, academia, grower groups and investors.

It utilises and leverages the power of the GGA grower group network 'hub and spoke' model to facilitate greater innovation from 'the ground up' – with the aim of helping farmers increase their resilience to the significant climate change occurring in the South-West WA region.

Grower groups are among the hub's more than 50 Consortium Partners, which are providing cash and in-kind co-contributions.

## Hub achievements

The SW WA Hub has assisted multiple stakeholders who have applied for FDF grant rounds, significantly strengthening applications and helping to ensure that targeted local projects have been funded in the last two years.

This has ensured that many applications reflect the drought resilience priorities that the hub has identified, through a comprehensive and consultative process, for projects in the South-West WA agricultural region.

The Australian Government and FDF have now funded 29 projects in South-West WA worth more than \$23 million, including co-contributions. The hub's involvement ranges from being the lead organisation through to investing capability into projects or maintaining contact with project representatives and communicating outcomes.



## Attracting investment into WA

The GGA/SW WA Hub has received FDF funding for opportunities including:

- The 'innovation expansion' of the hub
- 'Combined hub' projects
- Adoption Officers
- 'Innovation Broker role' funding (with investment from AgriFutures and the Hub's 'innovation expansion')
- A Regional Soil Coordinator.

The Hub's new Adoption team, for example, is delivering activities that deliver value to stakeholders such as recent extension and adoption (E&A) training.

## Project outcomes

GGA/SW WA Hub projects are starting to generate tangible outcomes aimed at improving drought resilience, innovation and adoption.

For example, a SW WA Hub-initiated project led by the Department of Primary Industries and Regional Development (DPIRD) is investigating the potential of biodegradable mulch to improve water efficiency, influence soil temperature and control weeds while contributing to overall soil health.

Researchers observed that applying the mulch as a groundcover increased moisture levels in the soil, compared with areas of bare soil, at table and wine grape sites in the Swan Valley, Frankland and Margaret River.

This and other drought resilience project outcomes were showcased at the FDF's 2023 online Science to Practice Forum and a face-to-face producer workshop at Manjimup hosted by the hub. The workshop delivered information on topics such as dam performance and monitoring technology.



Caption: A SW WA Hub Science to Practice Forum Workshop held this year at Manjimup focused on the dual themes of precision agtech and water management.

## Session 6a - Hub Project 1



**Phil Honey**

Stirlings to Coast Farmers  
Smart Farms Coordinator

✉ philip.honey@scfarmers.org.au

Philip is a research scientist in the agricultural & environmental industries with a strong focus on technology implementation and adoption, precision agriculture, agtech and communication networks. He is passionate about implementing research and managing projects which integrate digital technologies and modern farming practices to improve on-farm productivity, environmental stewardship, operational resilience and profitability outcomes.

## Session 6a - Hub Project 1



**Chris O'Callaghan**

Liebe Group EO

✉ chris@liebegroup.org.au

Chris started with the Liebe Group in December 2006 as the Research & Development Coordinator and progressed to the position of EO in 2009, before stepping down in 2014.

Chris has now returned to the role for 2023. Chris graduated from The University of Western Australia in 2006 with a Bachelor of Agricultural Science and has also completed a Graduate Certificate in Business from UWA.



[BACK TO CURRENT PROJECTS](#)

**GROWERS CRITICALLY ANALYSING THE ROLE OF  
NEW TECHNOLOGY IN ON FARM DECISION  
MAKING - WHAT ARE THE POSSIBILITIES?**



Agtech decoded project

## Session Notes

## Session 6b - Hub Project 2



### Associate Professor Nik Callow

Associate Professor | UWA  
School of Agriculture and  
Environment

✉ [nik.callow@uwa.edu.au](mailto:nik.callow@uwa.edu.au)

Professor Nik Callow is a geographer, working across the areas of hydrology, geomorphology, Geographical Information Science (GIS) and remote sensing. His work is focused on advancing physical geography and our understanding of Australian landscape processes, particularly the impacts from changes in climate and human interaction with landscapes.

He established and managed the Civil Aviation Safety Authority (CASA) licensed drone remote sensing group as Chief Remote Pilot for The University of Western Australia (CASA.ReOC.0628) and holds the institutional Remote Operators Certificate (ReOC).

Nik manages and oversees the Remotely Piloted Aerial Sensing Platform and drone operations across the Faculty of Science at UWA.

He completed his BSc (Hons) and PhD (2007) in Geography at The University of Western Australia. Nik has a Graduate Certificate in Higher Education (GCHEd) from UQ (2011) and has held Teaching and Research Lecturing positions at The University of Queensland and now at UWA.



WaterSmart Dams project

## Session 6c - Hub Project 3



### Neil Lantzke

DPIRD Senior Research  
Scientist

✉ [neil.lantzke@dpiird.wa.gov.au](mailto:neil.lantzke@dpiird.wa.gov.au)

Neil is the lead for the Department of Primary Industries and Regional Development's (DPIRD) Vegetable team. Neil's current areas of interest include irrigation and fertiliser use efficiency, the use of marginally saline water for irrigation, cost effective protected cropping for warmer climates and soil management.

Neil has 30 years' experience with a wide range of horticultural crops (fruit, grapes and vegetables) as a consultant, researcher and grower, including extensive experience in project management of horticultural developments and R&D programs.

As the past director of a fruit and vegetable wholesale business with an annual turnover of \$10million, Neil is well versed in planning, budgeting, monitoring and business development as well as leadership and people management skills.



Modern soil moisture  
monitoring project

## Session Notes

# Segment D - What's new?

## Session 7 - First Nations matters | Aboriginal Cultural Heritage Act 2021



Cesar Rodriguez

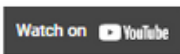
Manager Heritage Projects -  
Department of Planning,  
Lands and Heritage

✉ cesar.rodriguez@dplh.wa.gov.au

Cesar Rodriguez is Director of Engagement and Policy at the Department of Planning, Lands and Heritage (DPLH). He has been working in the heritage area for about 20 years and has spent the past five years working on the development of the new legislation. Cesar also has a background in GIS and remote sensing.



Department of Planning,  
Lands and Heritage



WA's new Aboriginal Cultural Heritage Act 2021 represents a significant step towards achieving equity in the relationship between Aboriginal people, industry, and government.

Laws to protect Aboriginal cultural heritage have been modernised, and came into effect from 1 July, 2023. Everything that land users are already doing now is permitted under the new Act.

The new process makes it simpler and fairer, introducing practical exemptions for the first time.

This includes exemptions for activities that are the same in area, height and depth as an existing land use.

To find out if you are impacted, please take our short quiz.

How am I impacted? >



Link to official  
government resources





## Session Notes



# WA Agricultural Research Collaboration

Innovation • Transformation • Growth



Western Australia's agricultural research, development and extension capabilities are being reinvigorated through the new **WA Agricultural Research Collaboration**.

The Collaboration brings together the Department of Primary Industries and Regional Development, Australia's national science agency CSIRO, Grower Group Alliance, Curtin University, Edith Cowan University, Murdoch University and The University of Western Australia.



# WA Agricultural Research Collaboration

Innovation • Transformation • Growth

This exciting initiative will build on scientific research efforts that underpin our State's great success and high productivity, and ensure the next generation of scientists have opportunities to create meaningful agricultural careers in WA.

The Collaboration will:

- apply cutting-edge science to our State's unique challenges and opportunities
- future-proof the sector and position WA for more national research funding
- contribute to national and international agricultural priorities
- create postgraduate scholarships for the next generation of leading scientists
- support WA primary producers to adopt new technologies across grains, livestock, irrigated agriculture and rangelands research.

Six programs have been identified for the Collaboration – the first three focused on boosting agricultural productivity and profitability in a changing climate: Northern Agriculture, Grains Transformation and Climate Resilience.

The remaining cross-cutting programs will support growth and long-term sustainability in WA's agricultural industry: Agricultural Technologies, Aboriginal Participation and Capacity Building and Extension.

The initiative is backed by \$25 million in WA Government investment through to 2025, and a \$10 million commitment from the Grains Research and Development Corporation. The Collaboration will attract additional funding from collaborators and industry-based research and development corporations.



The Collaboration

Find out more at [waagresearch.org.au](http://waagresearch.org.au) or email [info@waagresearch.org.au](mailto:info@waagresearch.org.au)



# Major event sponsors



**GROWER  
GROUP  
ALLIANCE**  
Together we grow



South-West WA  
Drought Resilience Adoption  
and Innovation Hub



**CBH**GROUP



**FARMANCO**



Official GGA Media Partner

# Thanks to additional sponsors



GOVERNMENT OF  
WESTERN AUSTRALIA

Department of  
**Primary Industries and  
Regional Development**

Information lounge -  
Friday conference room



South-West WA  
Drought Resilience Adoption  
and Innovation Hub

Four UWA PhD student  
delegate sponsorships



**AUSTRALIAN  
THROUGH  
& THROUGH**

Grower group delegate  
attendance package



**BLUESALT  
CONSULTING**

Grower group delegate  
attendance package



**CARBON SYNC**  
REGENERATIVE AGRICULTURE

Grower group delegate  
attendance package  
&  
Ag College student  
conference ticket



**Food, Fibre & Timber Industries**  
Training Council (WA) Inc.

Two Ag College student  
conference tickets

# Together, we're 90 harvests strong.

Congratulations and thank you to everyone who has helped us make it.

When CBH formed 90 years ago, the vision was for WA growers to work together to get their grain to market and strengthen the then struggling wheat industry. Now, we're celebrating 90 harvests, but more than that we are celebrating the longevity and strength of the WA grain industry.



[cbh.com.au](http://cbh.com.au)



# ANALYSE - INNOVATE - GROW



## Who are we?

Farmanco maximizes farm potential & profitability through tailored solutions, original research & innovative software. We ensure farms remain progressive, sustainable & profitable by equipping farmers with the tools & knowledge for success in the industry.

## Services

Farm Management  
Agronomy  
Precision Agronomy  
Grain Marketing  
Bookkeeping  
Natural Capital Management  
Research

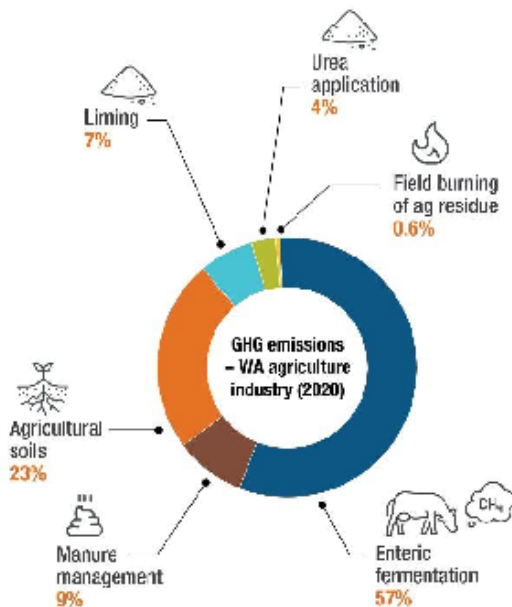


# Reducing emissions in agriculture

Agriculture has been one of the most proactive of any industry in setting emissions reduction targets

Western Australia (WA) produces some of the lowest-emissions food in the world, often at least half of other industrialised nations, with 80% of its produce exported.

At the same time, agriculture is also responsible for 10% of WA's greenhouse gas (GHG) emissions. These emissions include methane from ruminants and manure, nitrous oxide from soils and synthetic fertilisers, and carbon dioxide from the application of lime and urea. However, unlike other sectors, agricultural activities can also sequester carbon in vegetation and soil.



The WA Government is committed to providing robust and credible emissions reduction pathways across a range of sectors.

As part of this commitment, the Department of Primary Industries and Regional Development (DPIRD) has engaged with farmers, producers, researchers, industry and agriculture-based associations for almost 2 years asking, "How do we get to net zero?", "How can we work together?" and "What can we do now?"

The recommendations from the Sectoral Emissions Reduction Strategies are due to be released at the end of 2023.

It has identified emission sources farmers can manage within their operations, such as nitrogen usage, and emissions sources in the supply chain that are out of their control (pre-farm emissions such as production of fertilisers and herbicides).

From this work, DPIRD is developing the agricultural component of the Sectoral Emissions Reduction Strategies which offers a variety of approaches to reducing agricultural emissions. These strategies will work towards meeting the expectations of trading partners and consumers that food and fibre are sustainably produced and fulfilling Australia's commitment to the Paris agreement.

WA's agricultural production has continued to increase over the past 50 years despite up to 20% less winter rainfall, more frost and high temperature events, acidifying soils and increasing input costs, due to new, better-adapted crop varieties, changed management practices and sustainable farming systems.

Achieving climate resilience requires both adaptation and the mitigation of GHG emissions. Primary industries' ability to adapt to changes in climate and market demands and adopt new innovation is key to enabling economically feasible low-emissions pathways across all sectors.

There is more to learn on the road ahead but WA primary industries, with its 5000 small to medium enterprises, visionary companies and committed communities, lead by grower groups, are up to the challenge.





EXCEPTIONAL

EDGE

AgriFutures®

**evoke** AG®

20 - 21 FEBRUARY

2024

PERTH, WA

EARLY BIRD TICKETS  
NOW ON SALE

[EVOKEAG.COM](http://EVOKEAG.COM)

Host City Partner



Platinum Partner





# AUSTRALIAN THROUGH & THROUGH

**KNOCKDOWN AND  
RESIDUAL CONTROL  
OF BROADLEAF WEEDS  
AND GRASSES.**



**Nufarm TERRAIN<sup>®</sup>  
FLOW**



Nufarm Terrain Flow offers residual control of broadleaf weeds and grasses in a range of broadacre crops including Wheat, Faba beans, Lentils, Chickpeas, Field peas and Lucerne. The improved formulation of Nufarm Terrain Flow is a very useful tank mix partner with common wheat pre-emergent chemistry. Nufarm Terrain Flow has an ideal fit with grass pre-emergent herbicides to broaden the spectrum of weed activity. Nufarm Terrain Flow has an average DT50 of 18 and this combined with its other characteristics make it ideal for residual control of weeds at application and for managing plantbacks to sensitive crops being grown in the following season.





# CARBON SYNC

REGENERATIVE AGRICULTURE

Carbon Sync is an agricultural education and extension start-up business, specialising in soil carbon farming project development. We focus on integrated approaches to decarbonise agriculture, mitigate climate change and enhance climate resiliency. Along with soil carbon farming with the potential to generate carbon credits, we seek to create co-benefits of managing for healthy, high functioning soils and climate-smart systems. Carbon Sync provides a full-service “boots on the ground” project development service and are focused on farmers’ agricultural profitability and legacy.

Our experienced team provides education and advice in all aspects of agricultural decarbonisation, including soil carbon farming, on-farm emissions measurement and monitoring, offsetting, inseting, and biodiversity and nature repair market access. Carbon Sync’s approach ensures farmers have access to the latest science and methods, as well as market knowledge to enable access and brand premiums for their low-carbon and carbon-neutral commodities.

We build our projects on the basis that drawing down carbon from the atmosphere and sequestering it in the soil is the gateway to increasing the fertility, productivity and profitability of agricultural land. We believe in restoring the land as well as the communities which it supports.

At Carbon Sync, we believe in giving 110%. By using holistic farming methods, we help farming communities grow organically and we foster a customer-first mindset. We thrive because of our market knowledge and the great team behind our service offering.



CARBON SYNC  
REGENERATIVE AGRICULTURE



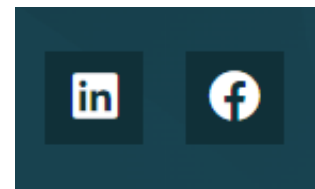


# BLUESALT CONSULTING

BlueSalt Consulting: Your strategic partner for regional projects.

Working across the private and public sectors, the BlueSalt team partners with you to identify your priorities, map your direction and articulate your value.

We support clients with Strategy & Planning; Research & Policy; Feasibility Studies; Sustainability Planning; Grant & Tender Writing; and Communications.



## Food, Fibre & Timber Industries Training Council (WA) Inc.

The Food, Fibre and Timber Industries Training Council (FFTITC) provides advice to the Department of Training and Workforce Development (DTWD) on workforce and skill shortages in the Food and Fibre industries. This information is used, amongst other things:

- to inform the allocation of government resources for training and workforce development;
- assist in the development of the State Training Plan; and
- provide input into the WA Skilled Migration Occupation List.



# Consider your beautiful question

Some examples of beautiful questions

**Why do we want kids to “sit still” in class?**

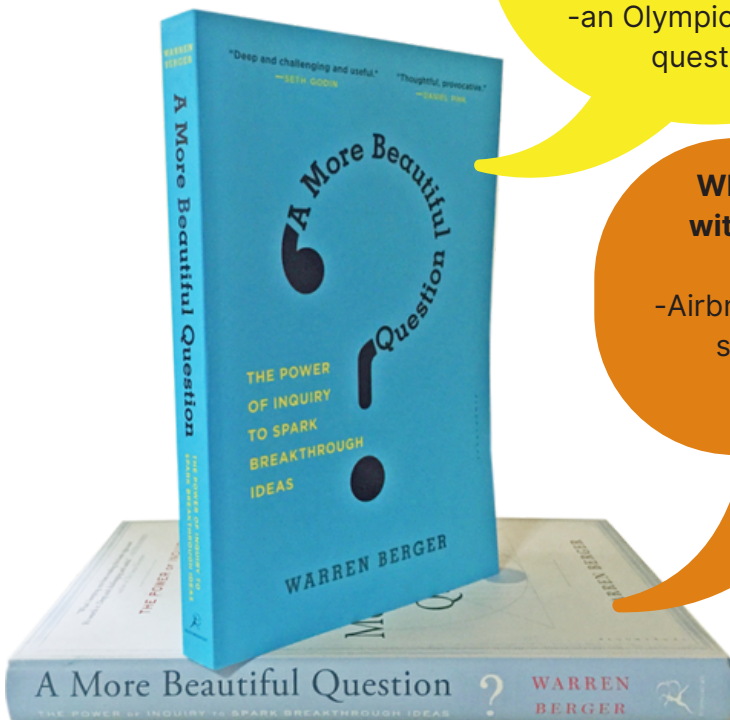
- new research says that’s just not a good way to learn.

**What if countries competed on playing fields instead of battlefields?**

-an Olympics worthy question

**Why should you be stuck without a bed if I’ve got an extra air mattress?**

-Airbnb’s \$10 billion valuation all started with a Beautiful Question.



**beau•ti•ful ques•tion** *n*: an ambitious yet actionable question that can begin to shift the way we perceive or think about something—and that might serve as a catalyst to bring about change.

(Berger, 2016)



Watch the video about 'Beautiful Questions' at <https://warrenberger.com/>

# Interactive Close

## Session 10 - Interactive close



**Erin O'Brien & Melanie Dixon**

West Midlands Group  
Beef Industry  
Development Officer &  
Mixed Farming Systems Officer

[beefofficer@wmggroup.org.au](mailto:beefofficer@wmggroup.org.au)  
[projects@wmggroup.org.au](mailto:projects@wmggroup.org.au)

Mel and Erin, both Animal Science graduates from Murdoch University, bring a wealth of experience and passion to the agricultural industry.

As project officers at the West Midlands Group since 2021, they have expanded their skills in project management, event organization, podcasting, and trial sampling.

With a focus on agricultural extension, they constantly seek innovative ways to share new knowledge and technologies with producers.

Mel and Erin work to captivate audiences with their expertise and genuine enthusiasm for driving progress in the industry.



 **Mentimeter**

## Session Notes



**#GGAForum23**

