

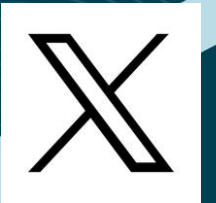


Department of  
Primary Industries and  
Regional Development

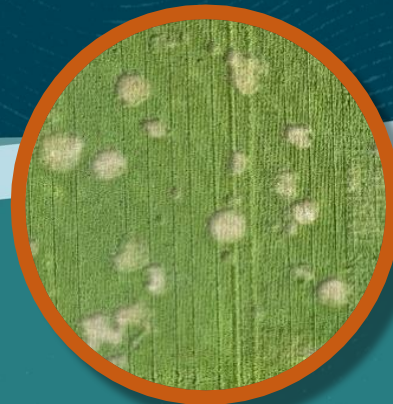
Protect  
Grow  
Innovate

# Soilborne diseases in a dry season and what might happen in 2024?

Daniel Hüberli



@DHuberli



# What is disease?

**2021 & 22**

BIG years for  
inoculum



**Pathogen**

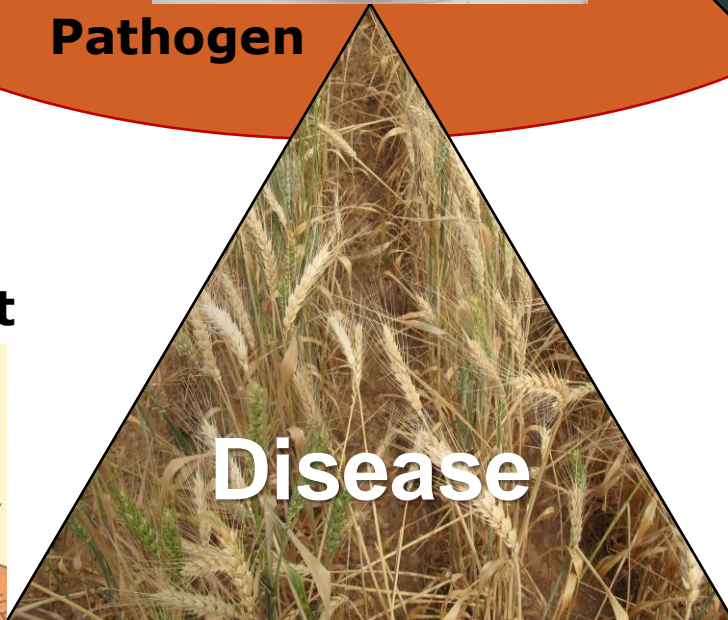
**2023  
PREDICTA B**



**Environment**



**Disease**

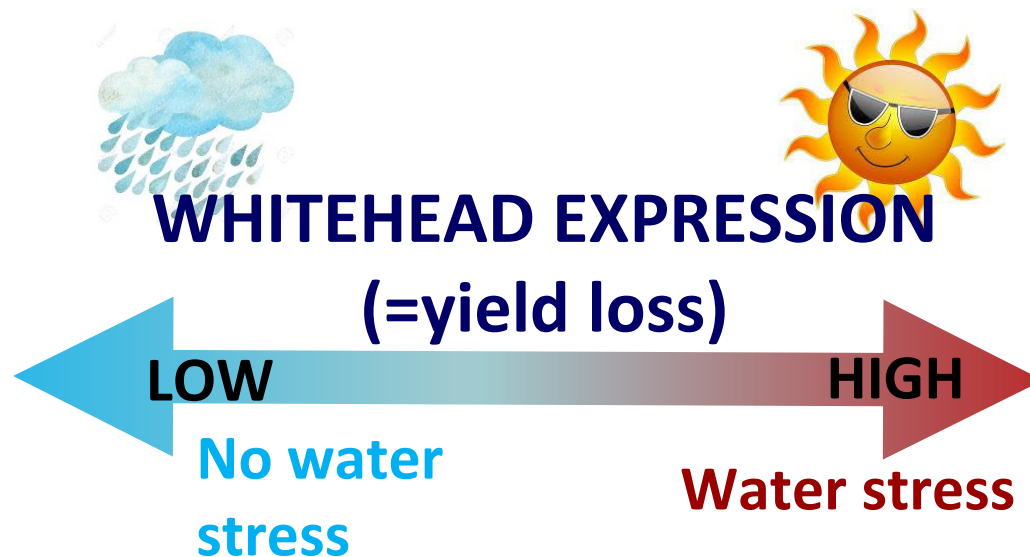
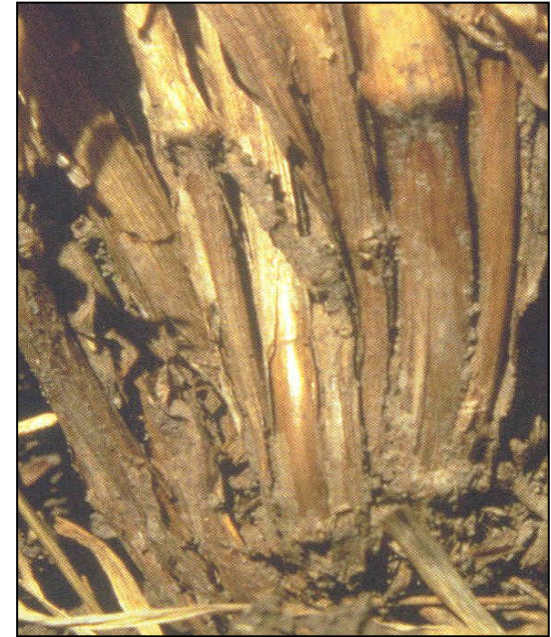


**Plant host**



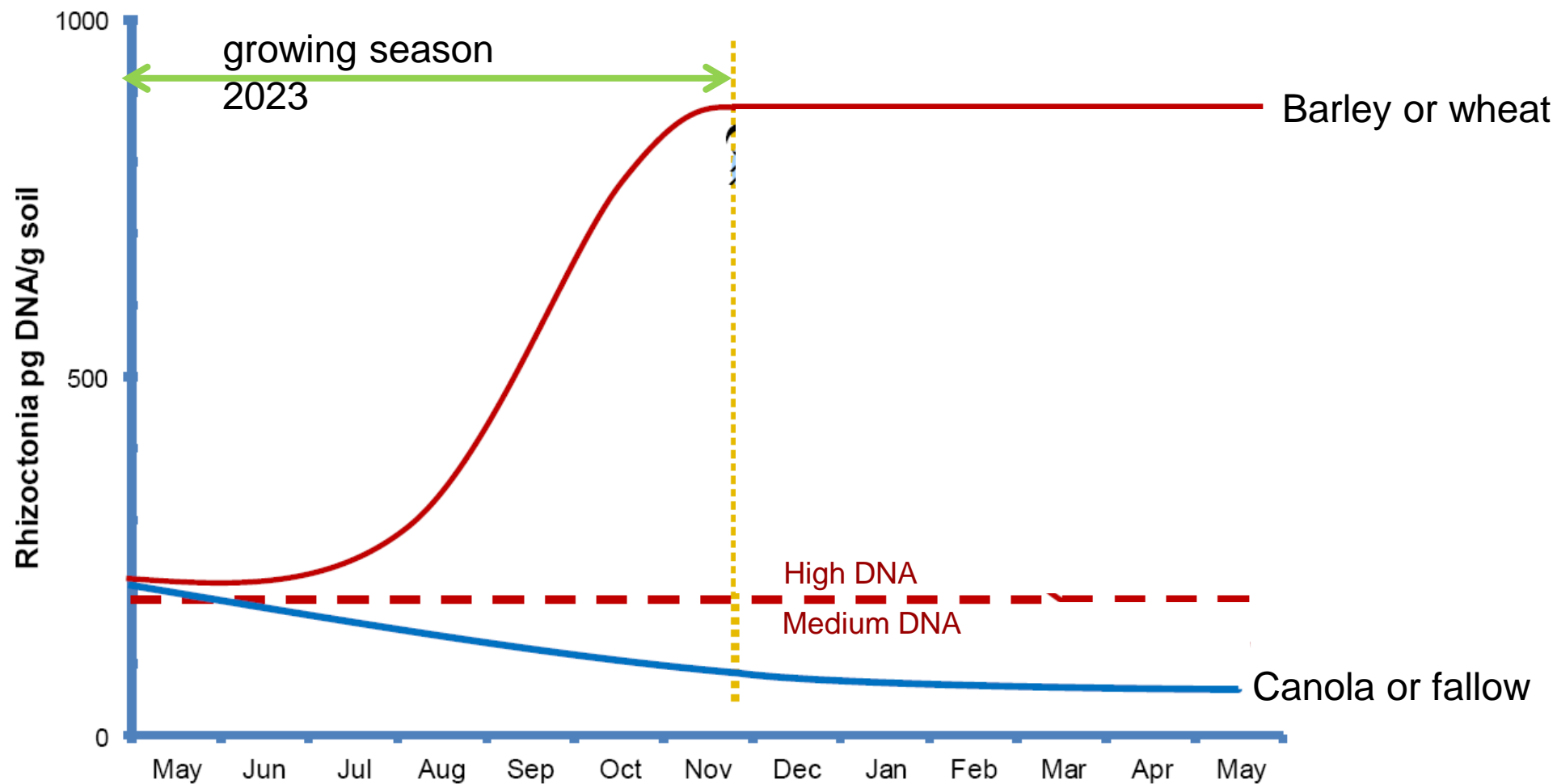
# Dry season 2023 – crown rot

- Lots of inoculum carry over from previous years in cereal stubble
- Cereal infection occurs with moisture early in season
- Sharp/dry finish stimulated growth of fungus up stem and resulting in many whiteheads



# Dry season 2023 – rhizoctonia bare-patch

From Gupta Vadakattu *et al.*, Adelaide CSIRO



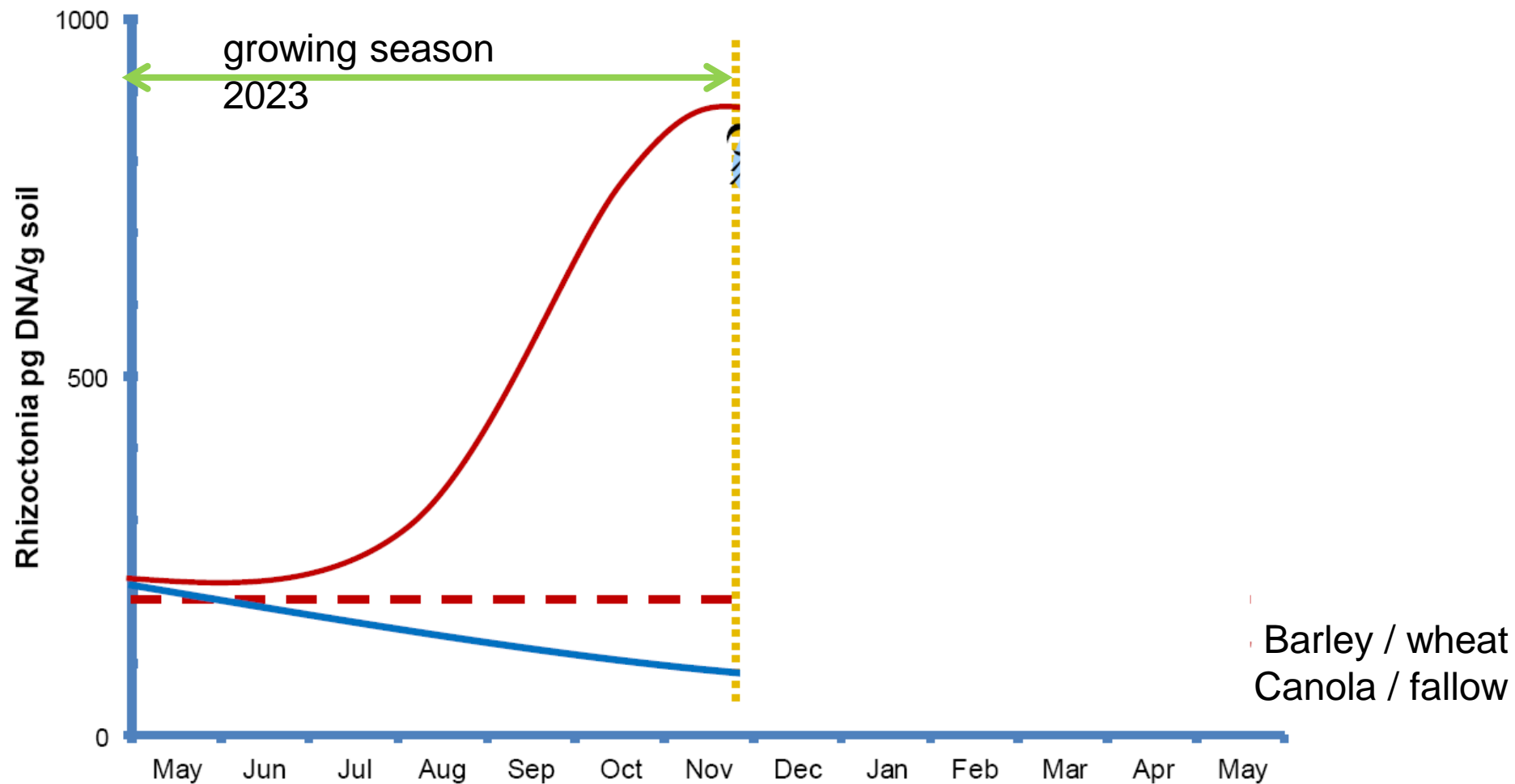
# Soilborne disease in 2024

- Inoculum survives over dry summer
- Questions about:
  - When is opening rain?
  - Will it be a dry Spring again?

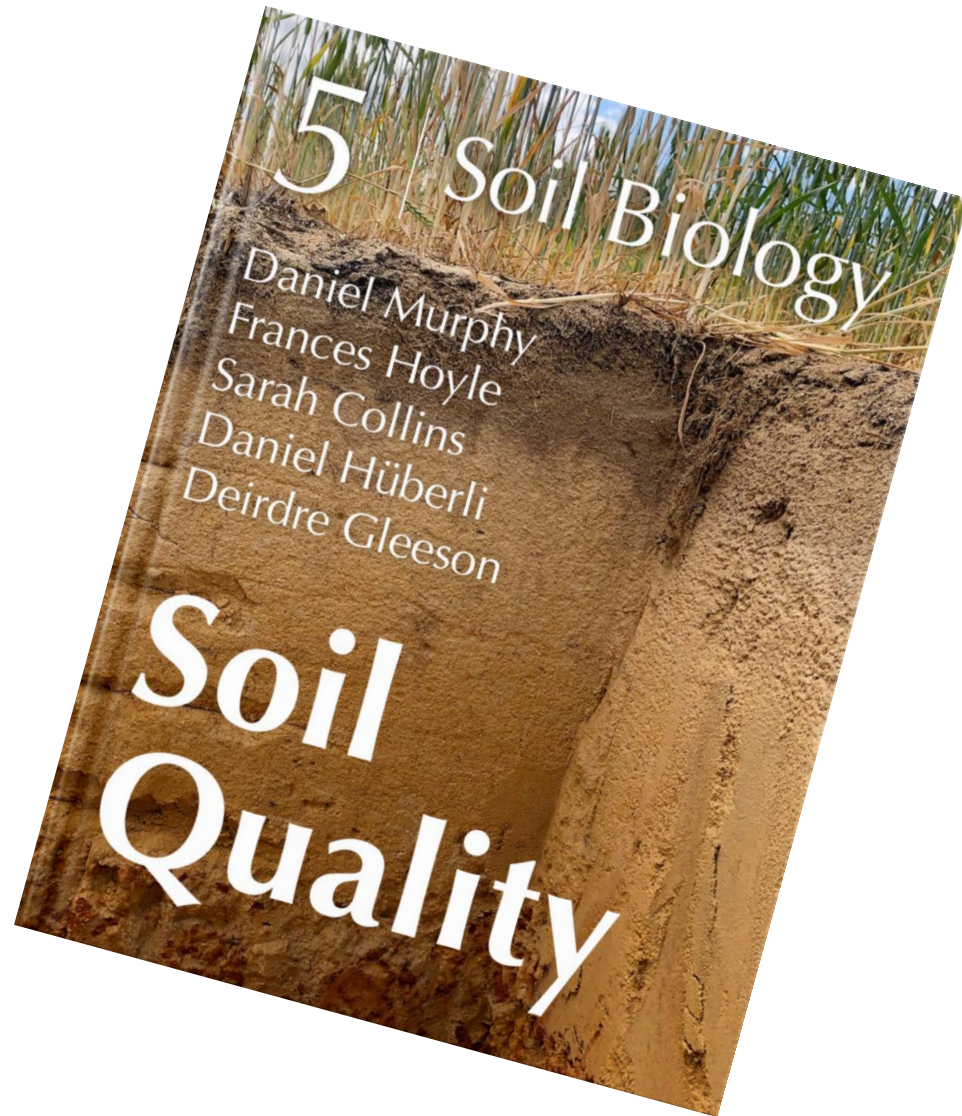


# Rhizoctonia – 2024 impact of environment

From Gupta Vadakattu *et al.*, Adelaide CSIRO

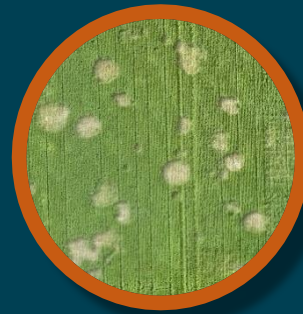


# More information on soilborne disease



# Thank you

[dpird.wa.gov.au](http://dpird.wa.gov.au)



## Important disclaimer

The Chief Executive Officer of the Department of Primary Industries and Regional Development and the State of Western Australia accept no liability whatsoever by reason of negligence or otherwise arising from the use or release of this information or any part of it.

Copyright © State of Western Australia (Department of Primary Industries and Regional Development), 2023.